



Doggy Camera Instructions for the Tucson location

You may view the doggy cameras online (using the Chrome internet browser on your desktop computer) at <http://www.centralpetaz.com/view-your-pet-in-tucson/>. Or, follow these instructions to view the cameras from your phone!

Step 1 – Download and install the app

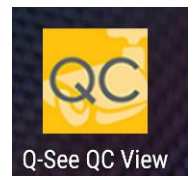
Download the mobile app called “**Q-See QC View**” to your phone or tablet. If you have a QR code reader, scan the QR code on the right to download the app. Or, find and install the app called “Q-See QC View”, or manually go to one of the following links:

iPhone or iPad: <https://itunes.apple.com/us/app/q-see-qc-view/id522318733>

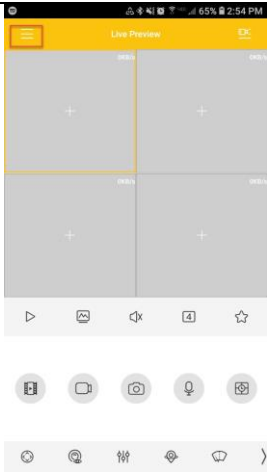
Android: <https://play.google.com/store/apps/details?id=com.mm.android.direct.qseepius>

Step 2 – Open the app

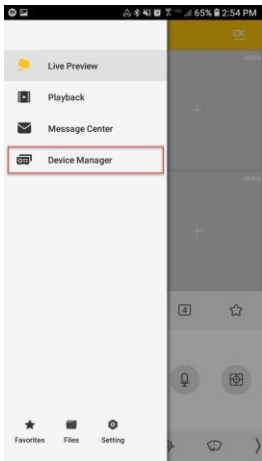
Tap on the app’s icon to open it up. The icon will probably look something like this:



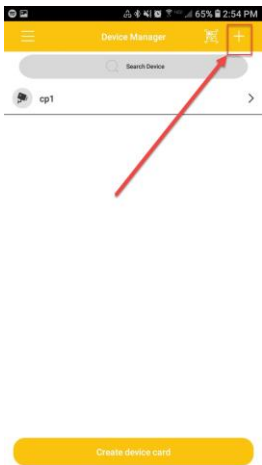
Step 3 – Connect the app to the camera system (see the next page)



Step 1: Click on the 3 lines to expand the menu



Step 2: Click on Device Manager



Step 3: Click on the Top "+" sign



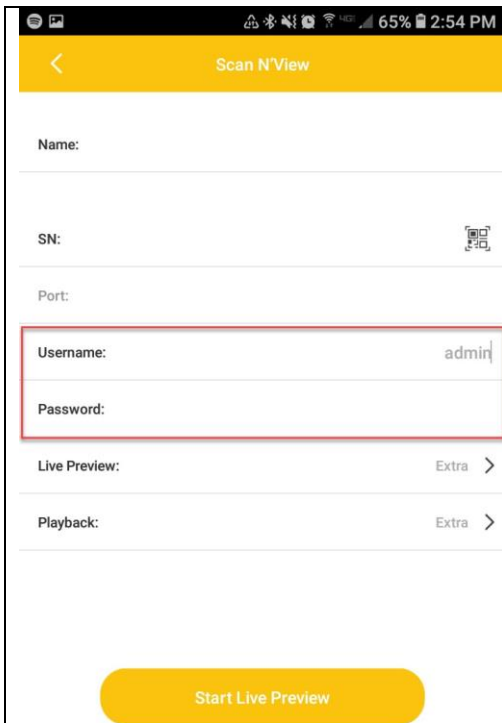
Step 4: Click Camera



Step 5: Click "Wired Device"



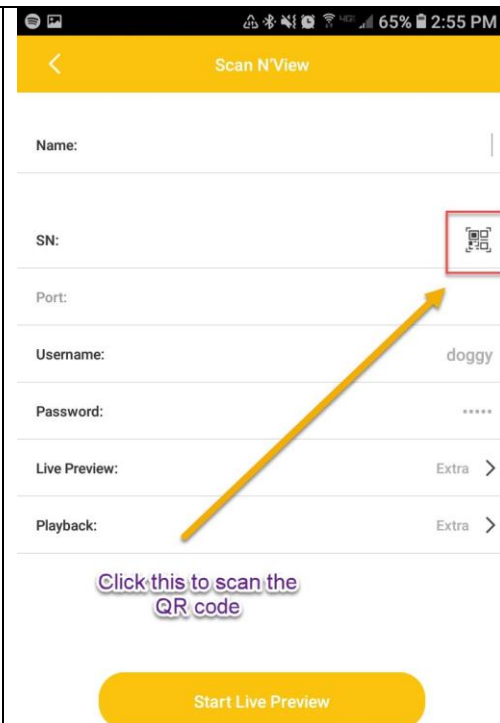
Step 6: Click "Scan n View"



Step 7: In the Username and Password slots put

Username: doggy

Password: doggy



Step 8: Click the QR scan icon. Scan this QR code.

